

PANORAMA

Luxury

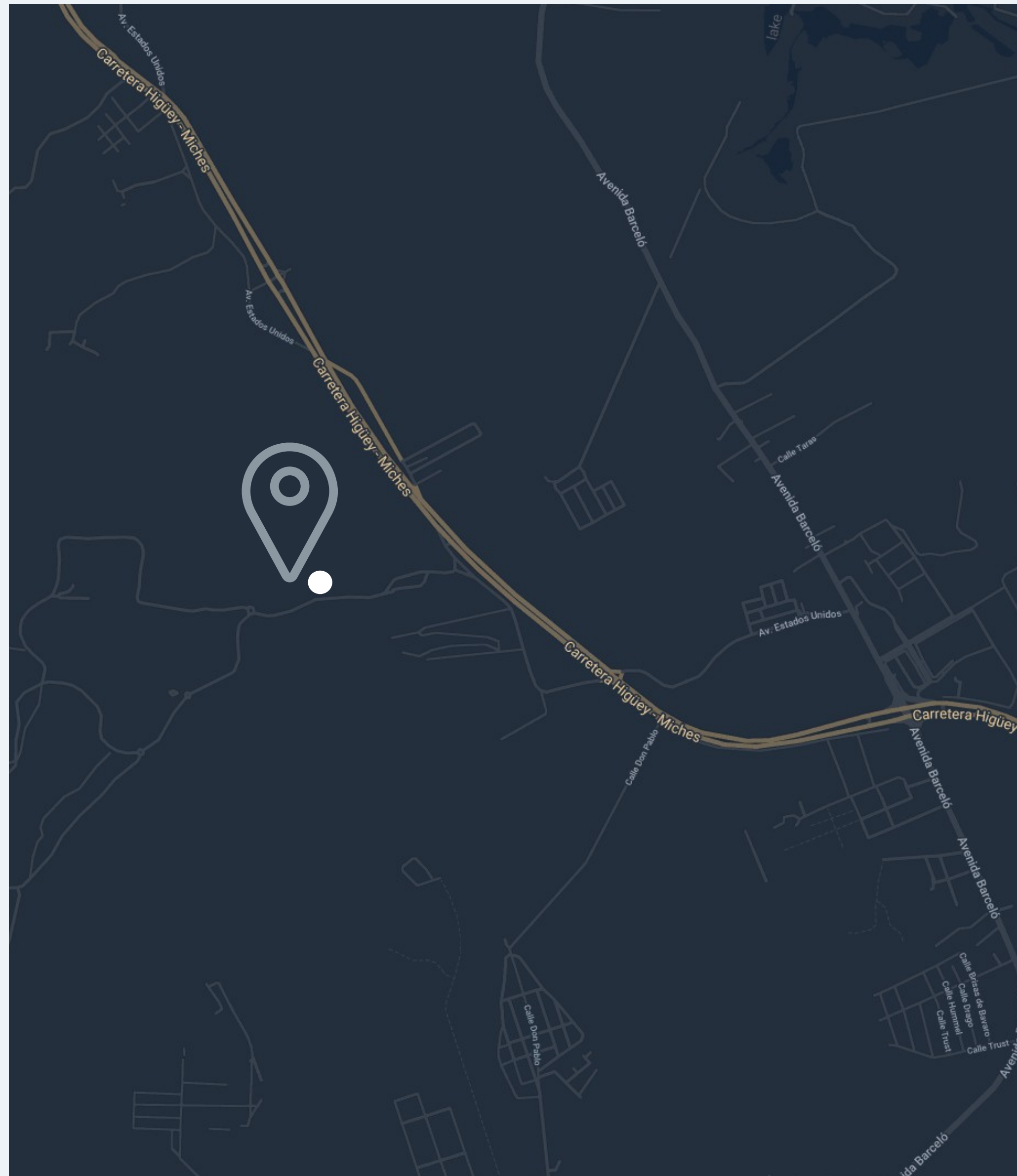


An aerial architectural rendering of a luxury resort. The scene features a large, curved clubhouse building with a white roof and multiple levels of balconies. Several swimming pools of various shapes are scattered throughout the property, some with lounge chairs and umbrellas. A golf course is visible in the foreground and middle ground, with a clubhouse and parking area nearby. The resort is surrounded by lush greenery, including palm trees and other tropical plants. The overall atmosphere is one of high-end luxury and relaxation.

PANORAMA

Luxury

Punta Cana



10

international Airport

03 MIN

DOWNTOWN PUNTA CANA

09 MIN

BLUE MALL PUNTA CANA

03 MIN

COCO BONGO

03 MIN

SAN JUAN SHOPPING CENTER



Punta Cana

PUNTA CANA IS A ROMANCE IN THE BEST STYLE OF THE CARIBBEAN SEA, AN ENCOUNTER WITH WONDERFUL BEACHES, WHERE THE WIND CARESSES THE COCONUT PALM TREES LOCATED ALL OVER AN EXTENSIVE COAST AND REST, PUNTA CANA IS SYNONYMOUS WITH RELAXATION AND REST, THAT TURNS EVERY MOMENT INTO AN UNFORGETTABLE EXPERIENCE. THE PERFECT ESCAPE TO A LANDSCAPE OF SOFT WHITE SAND AND BEAUTIFUL CRYSTAL BLUE SEA.

PUNTA CANA IS NON-STOP FUN UNDER THE SUN AND THE MOON, WHERE YOU CAN ENJOY:

SPA / GLOF FIELDS / RESTAURANTS / NIGHTLIFE
EXCURSIONS / SHOPPING PLACES / AIRPORT



AMENITIES OF VISTA CANA



9-HOLE ILLUMINATED GOLF COURSE.



FRESH AND SALT WATER LAKES FOR RELAXING, SWIMMING AND WATER SPORTS.



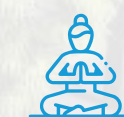
GREEN AREAS WITH ECOLOGICAL CIRCUITS.



PATHS FOR THE PRACTICE OF RUNNING.



SPORT FISHING.



AREAS FOR OUTDOOR YOGA PRACTICE.

An aerial rendering of a modern luxury apartment complex. The building is a long, curved structure with multiple levels and balconies. A large swimming pool is visible in the foreground, surrounded by palm trees and landscaped grounds. The overall scene is bright and sunny, suggesting a tropical or coastal location.

PANORAMA

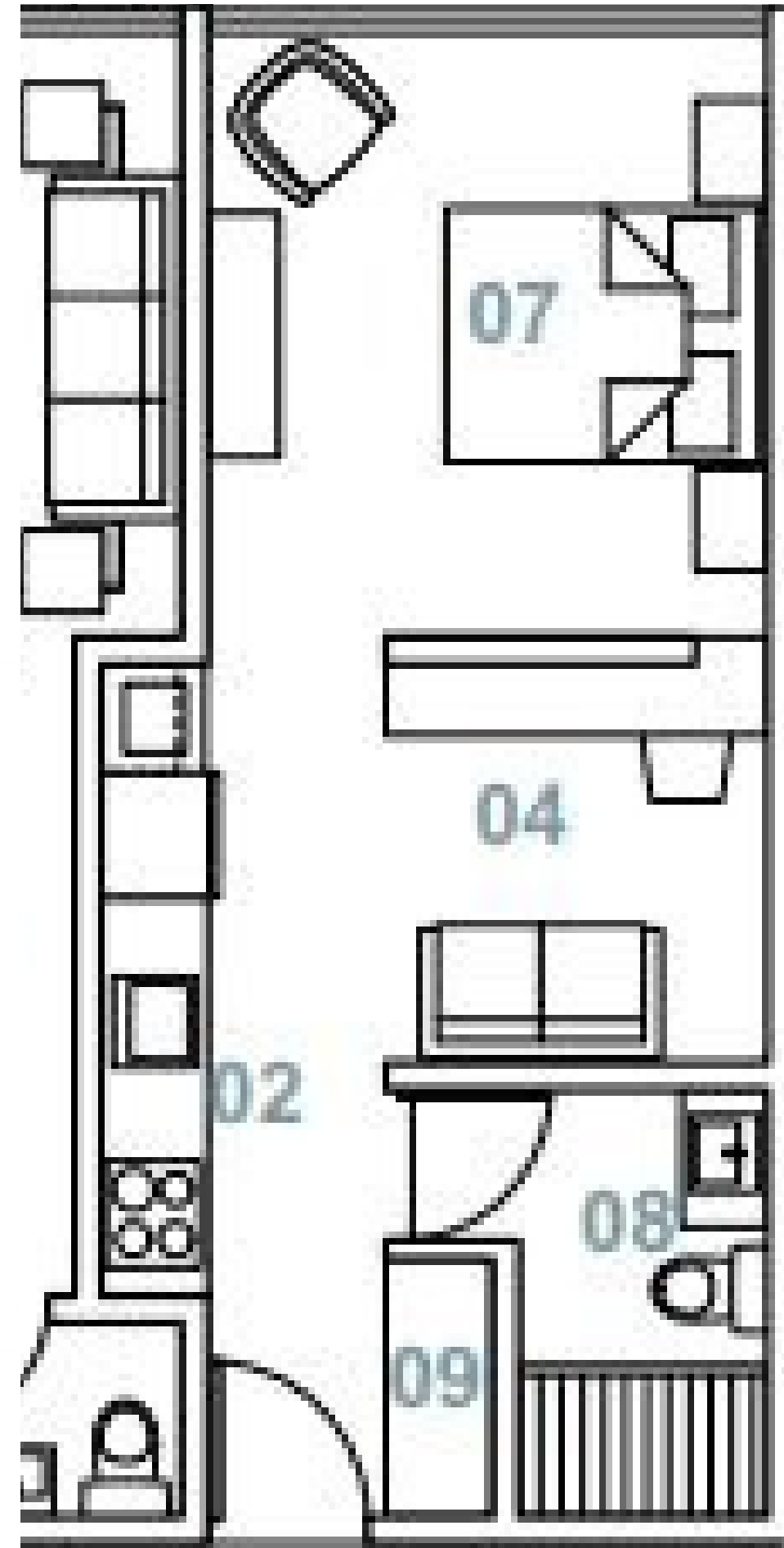
Luxury

TYPES OF APARTMENTS

WHITE LINE INCLUDED

COMPLETE APPLIANCES WITH A/C INCLUDED

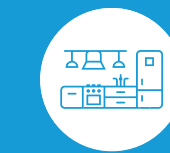
- FRIDGE - WASHER - DRYER - STOVE - EXTRACTOR - CENTRAL AIR



1 underground parking



LIVING ROOM



MODULAR KITCHEN



BATHROOM



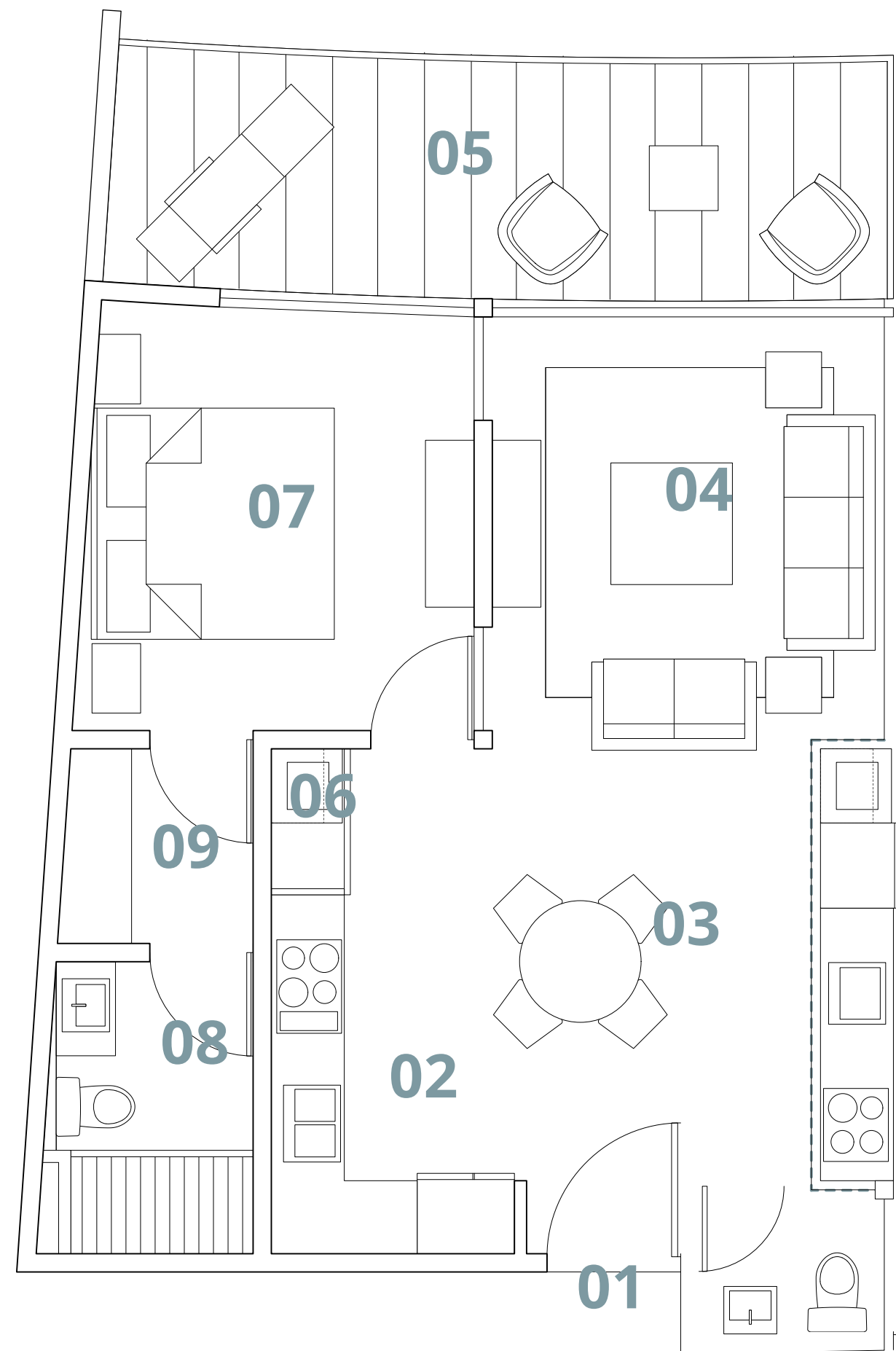
CLOSET

From 30.73 m²

1st floor units have patios from 15 m²

Suitable.

1 BEDROOM - TYPE 1 (1D-T1)



WHITE LINE INCLUDED

COMPLETE APPLIANCES WITH A/C INCLUDED

- FRIDGE - WASHER - DRYER - STOVE - EXTRACTOR - CENTRAL AIR

1 BR

1 underground parking

-  LIVING ROOM
-  DINNING ROOM
-  MODULAR KITCHEN
-  SOCIAL BATHROOM
-  LAUNDRY CLOSET
-  TERRACE

From 51 m2
united The 1st floor have patios from 15 m2.

Suitable.
2 BEDROOM - TYPE 1 (2D-T1)



WHITE LINE INCLUDED

COMPLETE APPLIANCES WITH A/C INCLUDED

- FRIDGE - WASHER - DRYER - STOVE - EXTRACTOR - CENTRAL AIR

2 BR

1 underground parking

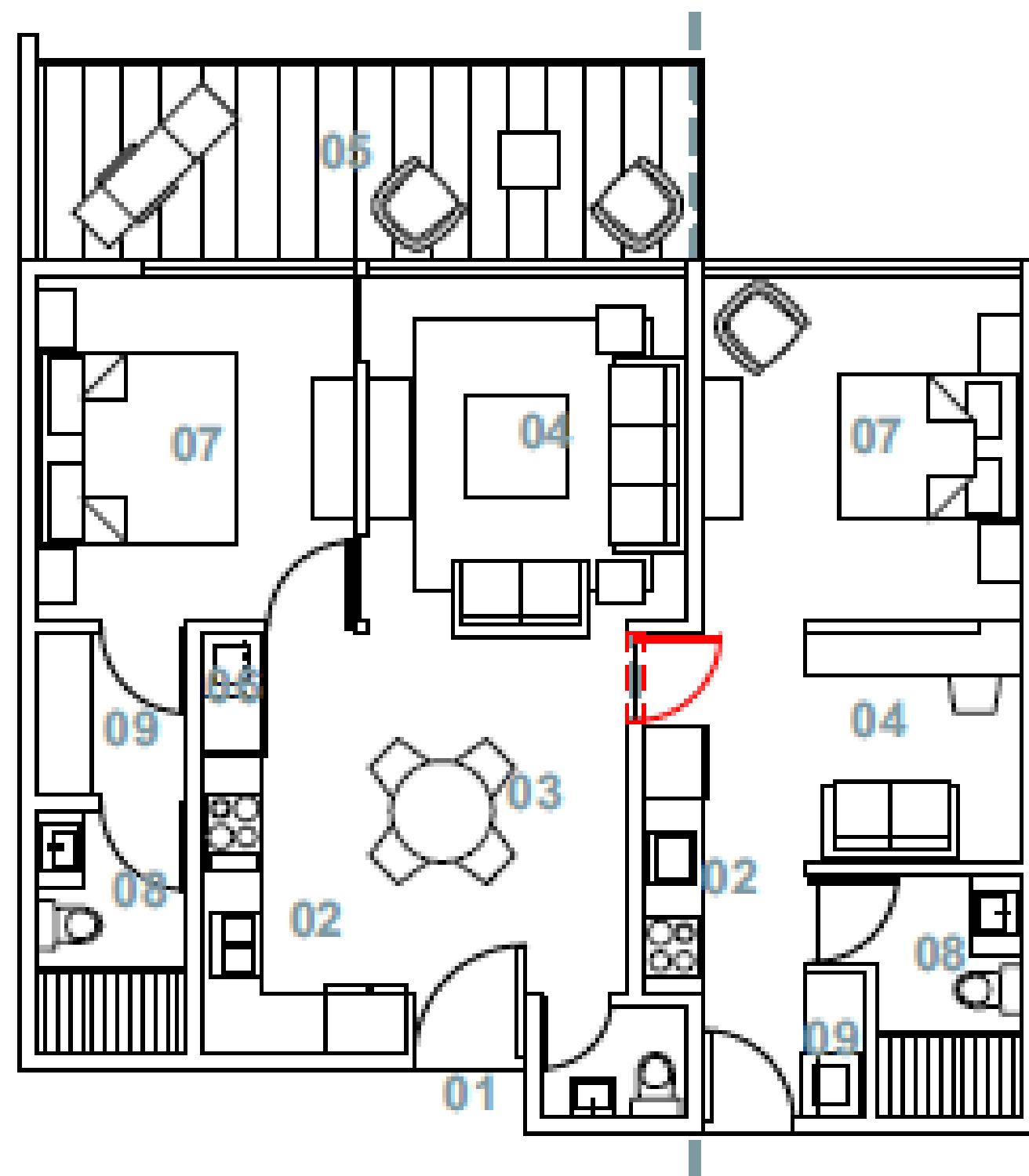
-  LIVING ROOM
-  DINNING ROOM
-  MODULAR KITCHEN
-  SOCIAL BATHROOM
-  LAUNDRY CLOSET
-  TERRACE

From 77.65 m2 + 13 m2 of terrace

Suitable.

1 BEDROOM - TYPE 1

+ SUITE TYPE 1 (1D-T1 CONNECTED)



WHITE LINE INCLUDED

COMPLETE APPLIANCES WITH A/C INCLUDED

- FRIDGE - WASHER - DRYER - STOVE - EXTRACTOR - CENTRAL AIR

1 BR + SUITE

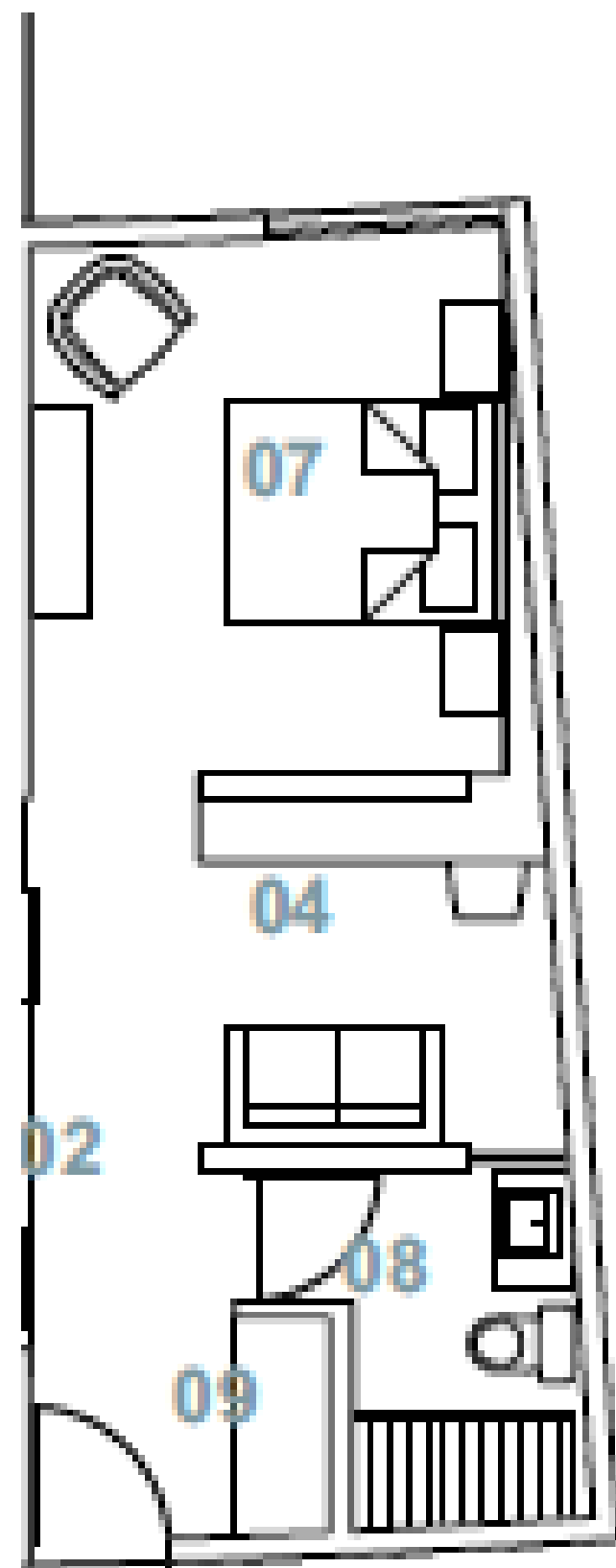
1 underground parking

-  LIVING ROOM
-  DINNING ROOM
-  MODULAR KITCHEN
-  SOCIAL BATHROOM
-  WASHING AREA
-  TERRACE
-  CLOSET

From 82 m2 + 13 m2 of
terrace

SUITE ROOM

1 BEDROOM - TYPE 2 (S- T2)



WHITE LINE INCLUDED

COMPLETE APPLIANCES WITH A/C INCLUDED

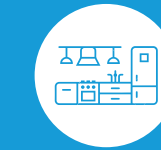
- FRIDGE - WASHER - DRYER - STOVE - EXTRACTOR - CENTRAL AIR

1 BR

1 underground parking



LIVING ROOM



MODULAR KITCHEN



BATH

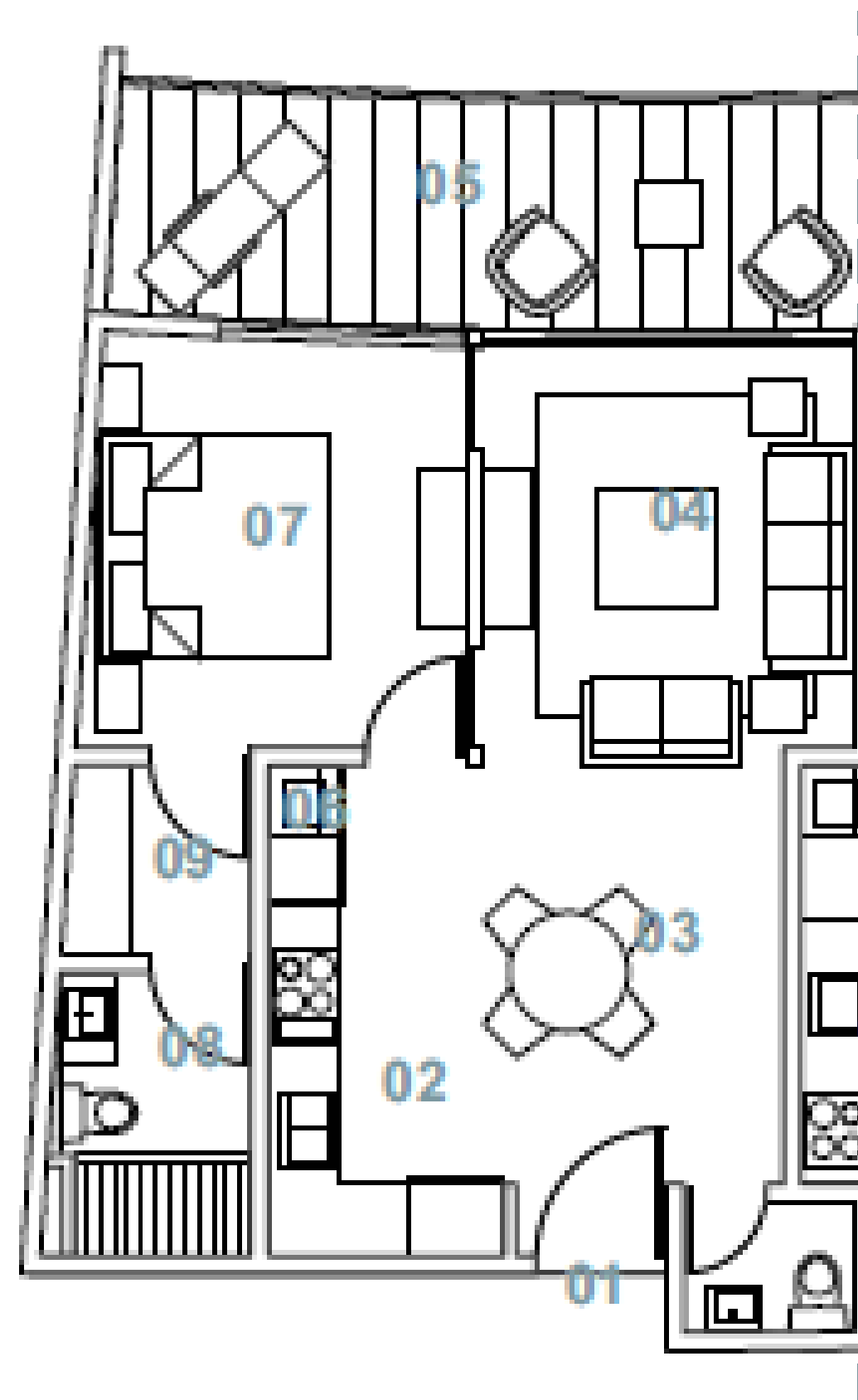


CLOSET

From 32.5 m² + 13 m² of patio

Suitable.

1 BEDROOM - TYPE 2 (1D- T2)



WHITE LINE INCLUDED

COMPLETE APPLIANCES WITH A/C INCLUDED

- FRIDGE - WASHER - DRYER - STOVE - EXTRACTOR - CENTRAL AIR

1 BR

1 underground parking



LIVING ROOM



DINNING ROOM



MODULAR KITCHEN



SOCIAL BATHROOM



LAUNDRY

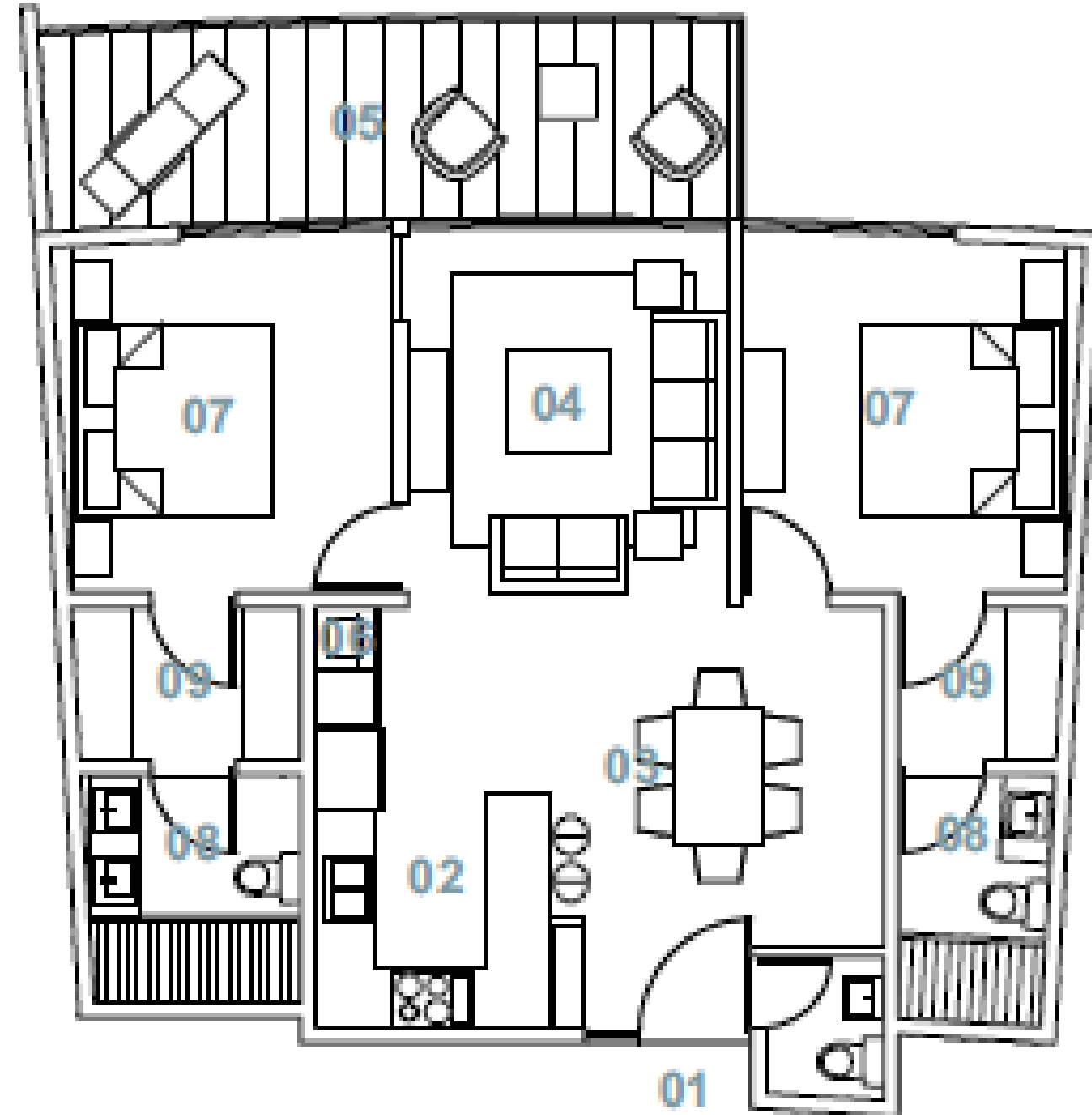


CLOSET TERRACE

From 53 m² + 13m² of terrace
+ 20 m² of patio

Suitable.

2 BEDROOM - TYPE 2 (2D- T2)



WHITE LINE INCLUDED

COMPLETE APPLIANCES WITH A/C INCLUDED

- FRIDGE - WASHER - DRYER - STOVE - EXTRACTOR - CENTRAL AIR

2 BR

1 underground parking



LIVING ROOM



DINNING ROOM



MODULAR KITCHEN



SOCIAL BATHROOM



LAUNDRY



CLOSET TERRACE

From 77 m2 + 13mt2 of terrace

SUITE ROOM

1 BEDROOM - TYPE 3 (T3- S)



WHITE LINE INCLUDED

COMPLETE APPLIANCES WITH A/C INCLUDED

- FRIDGE - WASHER - DRYER - STOVE - EXTRACTOR - CENTRAL AIR

2 BR.

1 underground parking



LIVING ROOM



DINNING ROOM



MODULAR KITCHEN



SOCIAL BATHROOM



LAUNDRY

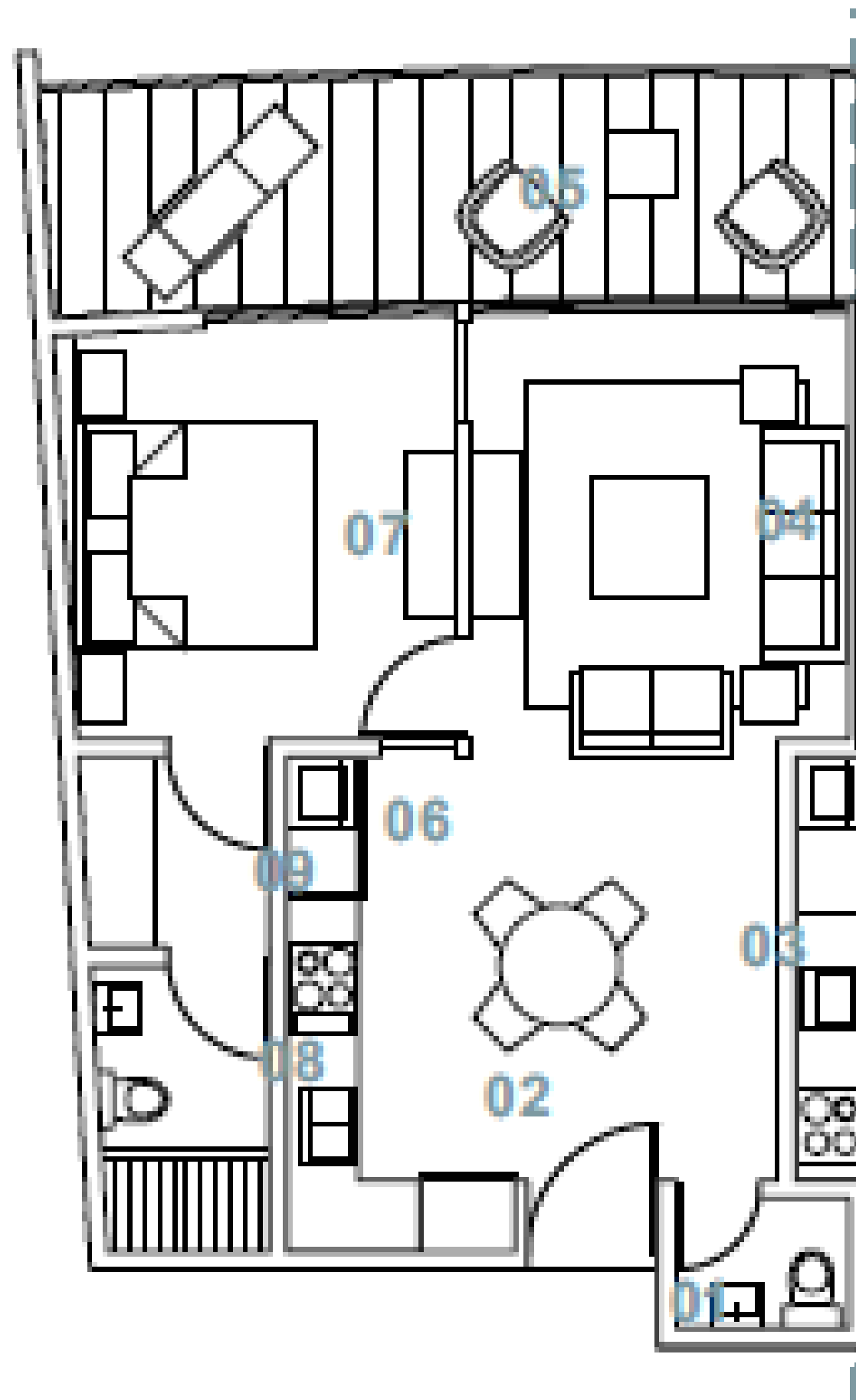


CLOSET TERRACE

From 77 m2 + 13mt2 of terrace

Suitable.

1 BEDROOM - TYPE 3 (1D- T3)



WHITE LINE INCLUDED

COMPLETE APPLIANCES WITH A/C INCLUDED

- FRIDGE - WASHER - DRYER - STOVE - EXTRACTOR - CENTRAL AIR

1 BR

1 underground parking



LIVING ROOM



DINNING ROOM



MODULAR KITCHEN



SOCIAL BATHROOM



LAUNDRY



CLOSET TERRACE

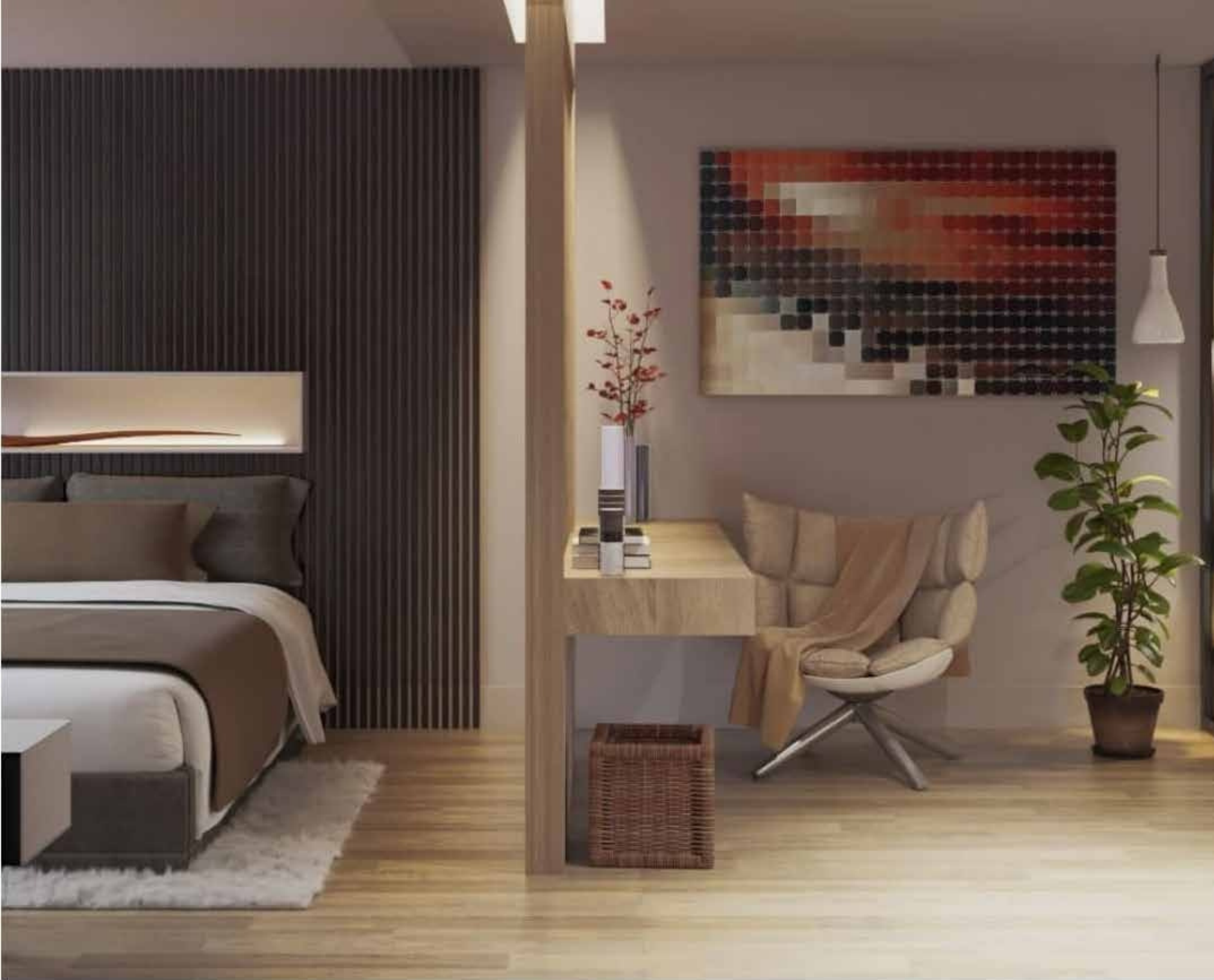
From 52 m2 + 13 MT2 of terrace





























PAYMENT PLAN

BOOK WITH
\$3,000

fifteen%
SEPARATE

60%
DURING CONSTRUCTION

25%
UPON DELIVERY

DELIVERY
SEPTEMBER 2025

"PENALTIES APPLY"

- NON-REFUNDABLE SEPARATION.
- THE TRANSFER COSTS ARE THE RESPONSIBILITY OF THE CUSTOMER, THE RECEIPT WILL BE MADE FOR THE AMOUNT REFLECTED IN THE CONSTRUCTION COMPANY'S ACCOUNTS.

